



# SARS-CoV-2 Antigen Assay Kit (Colloidal Gold Method)

.....  
(Self-testing)



POCT

# SARS-CoV-2 Antigen Assay Kit (Colloidal Gold Method)



The kit is for the rapid qualitative determination of SARS-CoV-2 antigen in anterior nasal swabs (front nose) of people suspected of having COVID-19 conceived within 1 to 14 days, mostly 3 to 7 days of symptoms appearing.



## Principle

This kit adopts the principle of colloidal gold immunochromatography sandwich method, and uses colloidal gold as the mark qualitatively detect the specific antigens of SARS-CoV-2 present in human sample.

## Technical specification

Sample type	anterior nasal (front nose) swabs
Time to result	15-20 min
Limit of detection	70 TCID <sub>50</sub>

- Easy to use, rapid test of COVID-19
- On site report in 15-20 mins
- Room temperature storage
- For self-testing, private use

## Packing specification

Catalog No.	Package	Materials supplied
2061702	20 tests/ kit	SARS-CoV-2 antigen test cassette, disposable sampling swab, bracket box, siphon dropper, extraction solution tube, instruction for use
2061703	1 tests/ kit	

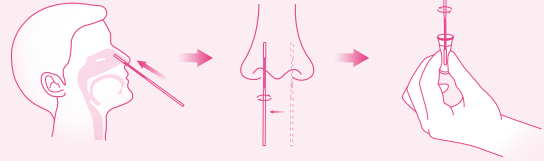
# Easy to operate, only 15-20 mins to result

## • Step 1



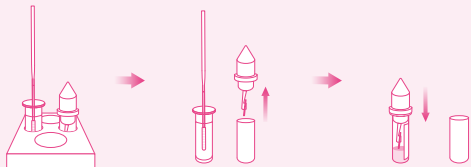
① Pierce the extraction solution tube cover.

## • Step 2



② Gently insert the swab tip into one nostril. The textile tip of the swab should be up to 2 cm to 4 cm deep until resistance is met. Rotate against the mucous membrane in nostril to make sure samples are well collected. Insert the swab with the sample into the extraction solution tube. Turn the swab 3 to 5 times.

## • Step 3



③ Remove the bottom plastic of siphon dropper, insert the capillary side in extraction solution tube.

## • Step 4



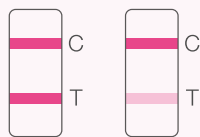
④ Apply 4 drops of the test sample into the sample well (S), by gently pressing the extraction tube. Observe the results within 15-20 minutes.

## • Scan QR code

Scan QR code for video introduction or see instruction for use for more detailed procedure.



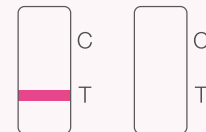
## Interpretation of the test results



**Positive**



**Negative**



**Invalid**

**Positive:** If within 15-20 minutes T line and C line appear, the test is valid and positive, no matter how faint the colored line in the test area (T) is.

**Negative:** If a colored line appears in the control area (C) within 15-20 minutes, while no colored line can be seen in the test area (T), the test is valid and negative.

**Invalid:** If no colored line appears in the control area (C) within 15-20 minutes, the test turns out invalid.



P/N: 02-70-01-5004-00[A]

**Zybio Inc.**

Address: Floor 1 to Floor 5, Building 30, No.6 of Taikang Road,  
Block C of Jianqiao Industrial Park, Dadukou District, 400082 Chongqing,  
PEOPLE'S REPUBLIC OF CHINA

Tel: +86-23 6865 5509 Fax: +86-23 6869 9779

Email: [info@zybio.com](mailto:info@zybio.com) Website: [www.zybio.com](http://www.zybio.com)

EN-C-POCT-SARS-CoV-2 Antigen Self-testing-R-20210915H

**POCT**